

ZUQRUF HEIGHTS

PARKVIEW, SOUTH C





ZUQRUF HEIGHTS

PARKVIEW | SOUTH C

THE NEW ADDRESS OF DISTINCTION

**Introducing Zuqruf Heights:
Your Exquisite Haven in South C.**

Experience modern urban living in this exclusive apartment development located in the prestigious South C neighborhood. Designed with families in mind, Zuqruf Heights offers a contemporary concept that combines style, comfort, and convenience.

Discover the perfect balance of privacy and luxury in our spacious 4-bedroom apartments, situated on their own wing. Each unit is meticulously designed to enhance privacy while providing ample living space for your family. The functional layout ensures every room serves its purpose, creating a harmonious living environment.

Zuqruf Heights boasts an enchanting address, complemented by exceptional amenities that elevate your lifestyle. Enjoy access to a variety of facilities designed to enhance your daily living experience. With an excellent location in Parkview South C, you'll have easy access to shopping centers, renowned schools, and esteemed healthcare facilities such as Nairobi South Hospital, BOMA hotel, and Wilson and JKIA airports.

Spacious Rooms



Designer Kitchen

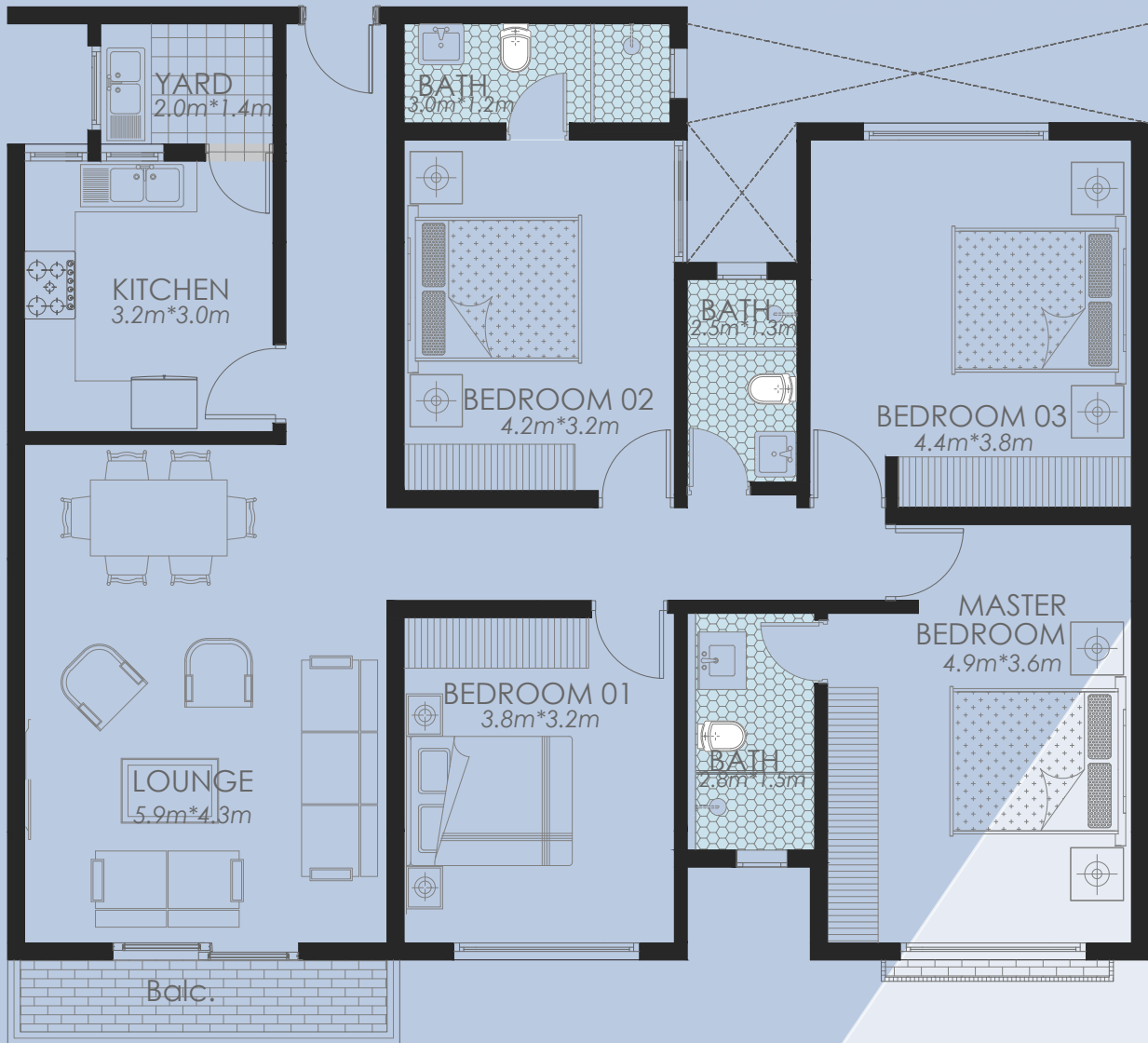


Ample Yard



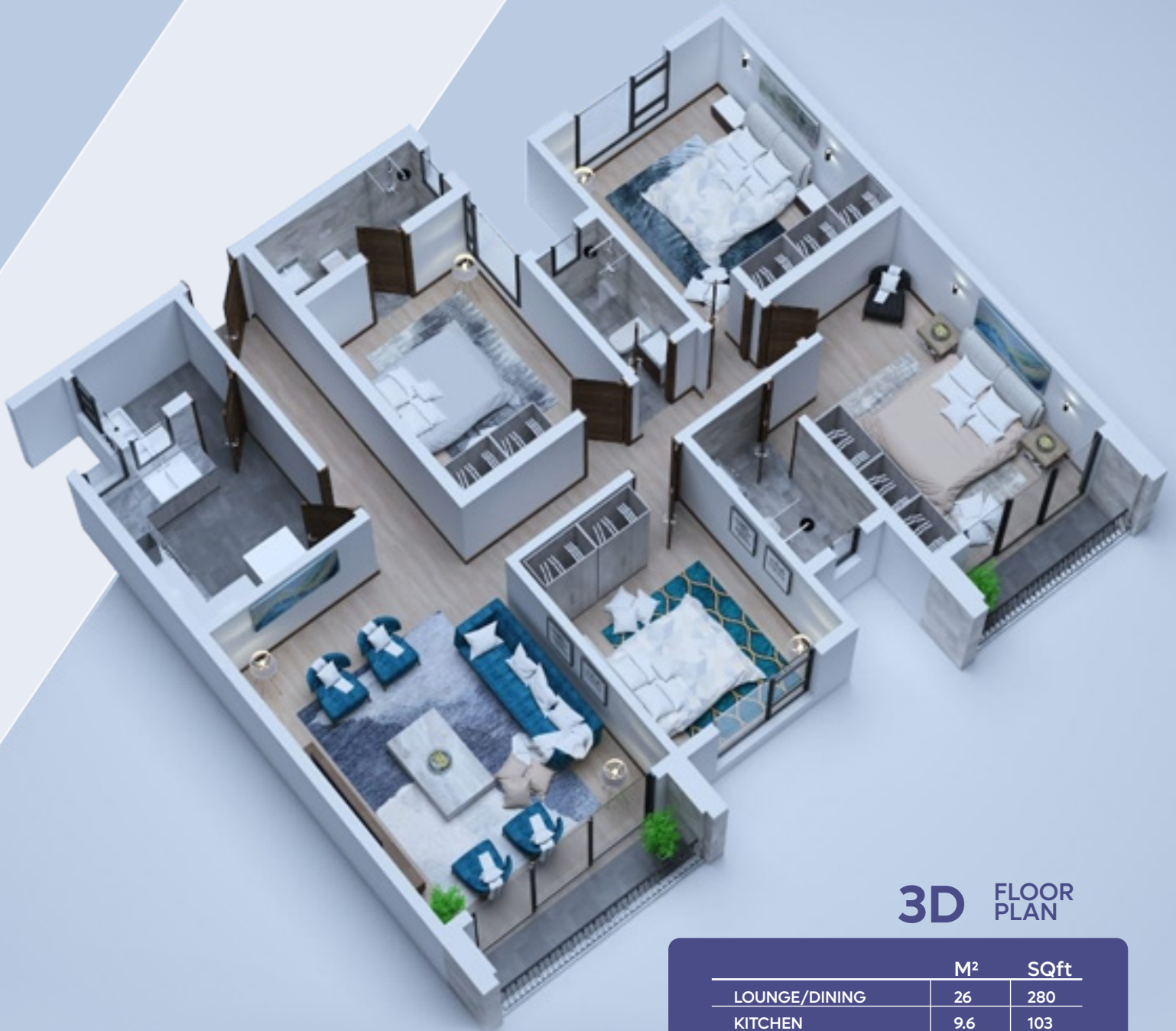
Parking Space





ZUQRUF HEIGHTS

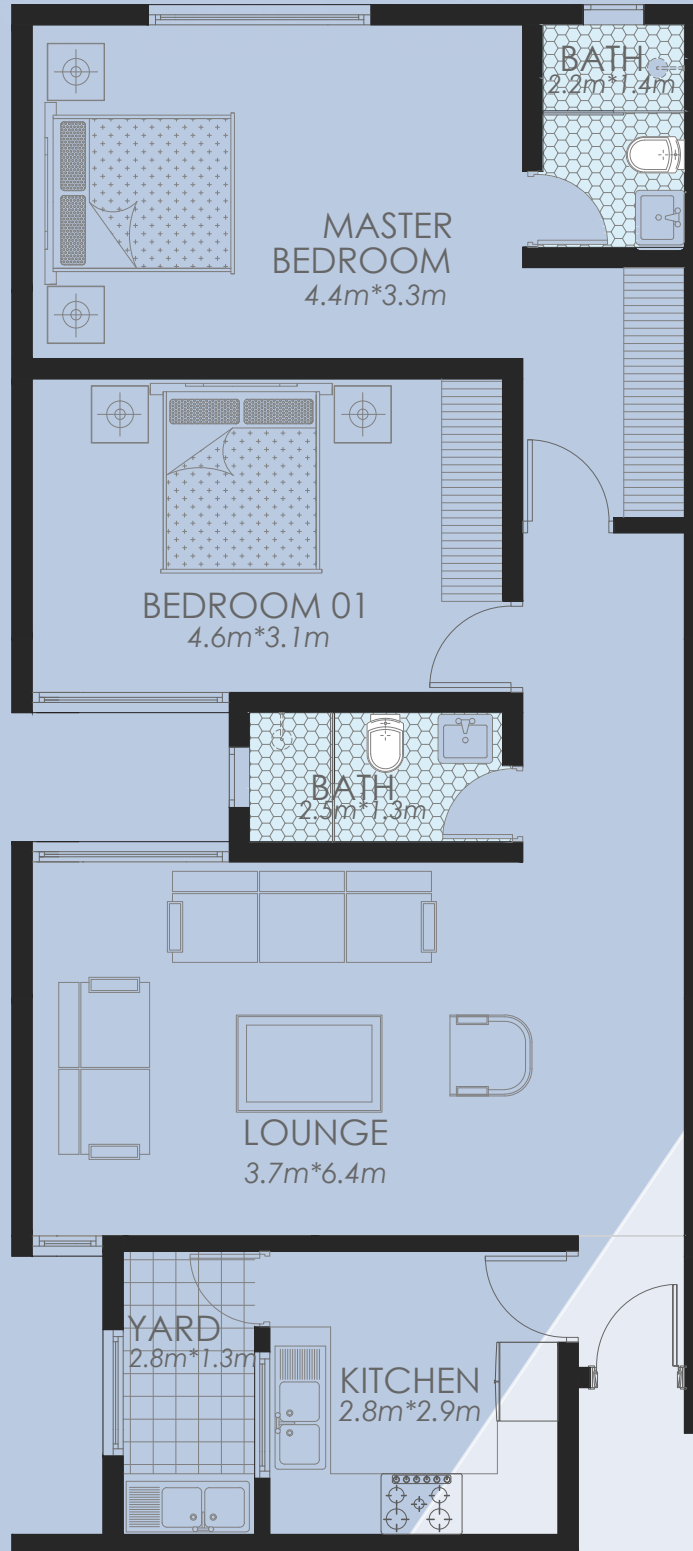
PARKVIEW | SOUTH C



3D FLOOR PLAN

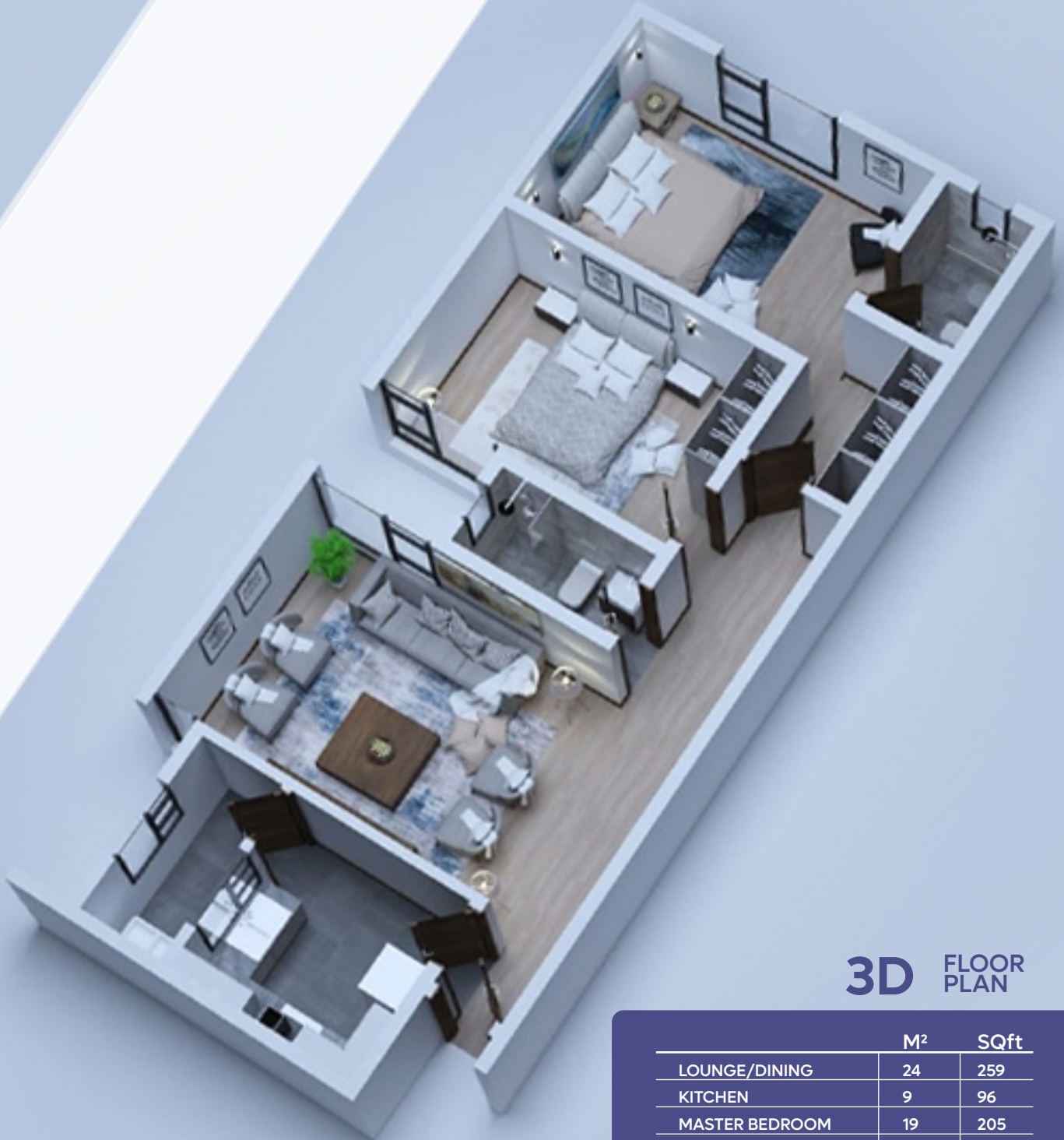
	M ²	SQft
LOUNGE/DINING	26	280
KITCHEN	9.6	103
BALCONY	6.5	70
MASTER BEDROOM	19	205
BEDROOM 2	13	140
BEDROOM 3	17	182
BEDROOM 4	13	140
YARD	3	32

TOTAL AREA
160.M² (1720 SQft)



ZUQRUF HEIGHTS

PARKVIEW | SOUTH C



3D FLOOR PLAN

	M ²	SQft
LOUNGE/DINING	24	259
KITCHEN	9	96
MASTER BEDROOM	19	205
BEDROOM 1	15	161
YARD	3	32

TOTAL AREA
95.M² (1020 SQft)

ZUQRUF HEIGHTS

PARKVIEW | SOUTH C

2D FLOOR PLAN



Some features may vary by apartment design. Prices and specifications subject to change without prior notice. All illustrations and images are artists' concepts. Furniture is displayed for illustration purposes only and does not necessarily reflect the plan for the townhouses. Units are sold unfurnished. See sales representative for more details.



LUXURY MEETS FUNCTIONALITY

within each apartment at Zuqruf Heights. The large living and dining areas provide ample space for relaxation and entertainment.

The professionally designed and fitted kitchen is equipped with modern appliances and offers ample storage. Retreat to spacious bedrooms that offer a serene sanctuary for rest and rejuvenation.

Parking is made convenient with ample space available for residents and their guests. At Zuqruf Heights, we prioritize your convenience and aim to make every aspect of your living experience effortless.

Don't miss out on the opportunity to experience contemporary living at its finest. Contact us today to schedule a private tour of Zuqruf Heights and secure your place in this extraordinary community.



36

Contemporary Modern Apartments

4 & 2 BEDROOM
APARTMENTS

1 HIGH SPEED
ELEVATORS

1 PARKING BAY
PER UNIT
VISITOR PARKING AVAILABLE



EXTERIOR FEATURES

- Contemporary Urban exteriors with rich architectural details.
- 2 levels of parking. Visitor's parking available.
- Roof Top Garden Terrace.
- Power backup Generator.
- High speed elevator.
- CCTV monitoring and access control.
- Internet and satellite connectivity.
- Intercom Communication.



FITTED KITCHEN

- Designer cabinetry with upper cabinets.
- Granite countertops.
- Stylish Imported tiles throughout kitchen.
- Under-mounted double bowl sink.
- Spacious yard.



LUXURIOUS BATHS

- Stylish imported tiles
- Showers with glass enclosure
- Ceramic and porcelain tiles in all baths
- Cultured marble vanity tops
- Imported brand name sanitary fittings
- Low-consumption, elongated water closets
- Hanging vanities in all baths.

ZUQRUF HEIGHTS

PARKVIEW | SOUTH C



1 ENSUITE
PER UNIT

1 PRAYER
HALL

ZUQRUF HEIGHTS



ZUQRUF HEIGHTS

FOR SALES & ENQUIRIES:
0769333444 / 0729430062

info@zuqrufdevelopers.com

Developer: zuqruf developers ltd

